



**CERTIFIED
QUALITY ANALYST
TRAINING**

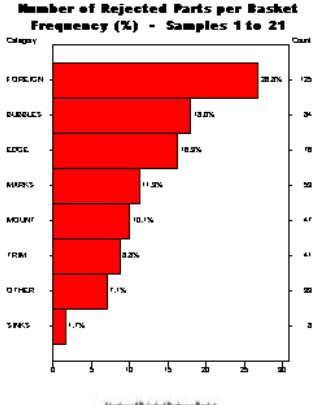
This workshop is led by METQUIP SYSTEMS and is provided to you in conjunction with Northwest Analytical, Wonderware, and MAP Quality Engineering.



Quality Analyst Training

Workshop Description

This workshop provides the participant with an understanding of how to use Quality Analyst™ for off-line statistical quality control (SQC) and data analysis. This workshop explains the basics of the data editor and the graphics viewer, data sets are explored, charts and charting options are practiced, and basic statistical analyses are performed. Building on this foundation, the most powerful features of Quality Analyst™ are explored. Participants learn to write queries, import data from spreadsheets, text files and databases, automate data reception and statistical reporting. This workshop utilises the following databases: Excel™, Access™ and SQL Server™.



Workshop Purpose

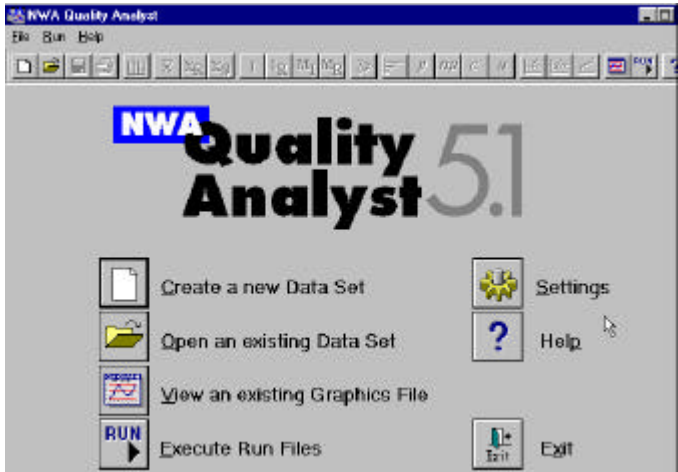
This purpose of this workshop is to teach the most common uses of Quality Analyst to facilitate statistical analysis and to create statistical charts and graphs. It should also familiarise the participant with the most powerful Quality Analyst features including database connectivity. Additionally, we will explore how off-line statistical quality control (Quality Analyst) complements on-line statistical process control.

Workshop Prerequisites

Introductory statistical process control and basic computer skills, a working knowledge of spreadsheets and ODBC databases, are prerequisites for this workshop.

Workshop Objectives

- Introduce the Quality Analyst data editor and graphics viewer.
- Explain the data file structure: .DAT and .HED.
- Teach how to create calculated data values.
- Demonstrate how to customise charts and reports.
- Teach participants how to add annotations to charts.
- Teach the use of the rule violations and descriptions windows to provide insight to charts and graphs in the graphics viewer.
- Demonstrate how to create control charts, Pareto diagrams, histograms, and box plots.
- Teach how to create formatted reports.
- Show how to perform t-tests and regression analysis.
- Teach how to import data from Microsoft® Excel™ as a .CSV file.
- Discuss the complementary benefits of off-line SQC (Quality Analyst) and on-line SQC.
- Teach how to import data from Excel, Access and Microsoft® SQL Server.
- Demonstrate how to write a query using Microsoft Access and link to an ODBC database.
- Teach how to import a query into Quality Analyst.
- Demonstrate how to simultaneously import data from Microsoft Access and Microsoft SQL Server into one Quality Analyst data set.
- Demonstrate how to use dynamic data exchange (DDE) to automate data reception.



Sydney Office
Unit E1, 25 Paul St North
NORTH RYDE NSW 2113
Telephone: (02) 9870 8758
Fax: (02) 9870 8761

Brisbane Office
Office 12, Level 1,
1344 Gympie Road
ASPLEY QLD 4034
Telephone: (07) 3863 9955
Fax: (07) 3863 9950

Melbourne Office
4 Kershaw Drive
NARRE WARREN VIC 3805
Telephone: (03) 8790 6200
Fax: (03) 8790 6300



**CERTIFIED
QUALITY ANALYST
TRAINING**

This workshop is led by METQUIP SYSTEMS and is provided to you in conjunction with Northwest Analytical, Wonderware, and MAP Quality Engineering.



Northwest Analytical, Inc

Quality Analyst Training

Workshop Itinerary

Introduction

Introduce workshop itinerary, goals, and objectives. Discuss on-line and off-line uses for SPC/SQC.

Software Features and Functions

Review the organization of the key components of the software: the Data Editor, Graphics File, Run File, and System Parameter Settings. Configure statistical settings, formulas, and rules.

Data Sets

Introduce the data file structure: .DAT and .DAT files. Open an existing data set and create a new data set. Create calculated data values within existing data sets. Show how to create an ODBC data source. Import SQL Server data using the database table and variable selector.

Charts

Explore the types of charts and the relation to variable type. Create charts and view multiple charts at the same time. Create and print a report containing multiple charts.

Formatting Charts

Explore the use of the rule violations and descriptions windows. Add comments and annotations to a chart; create and change the x-axis descriptions of charts, and personalize the graphics colors.

Histograms

Teach how to add and change specifications; change distribution types; edit the statistical display at the bottom of the histogram, and create a capability report.

Control Charts

Explain how to manage control chart parameters: scale, limit regions, and plotting. Filter, tag, and sort data. Create a control chart with different control regions.

Pareto Diagrams

Show how to edit the display, format, and sort methods. Create cost-adjusted Pareto diagrams.

Formatted Reports

Demonstrate how to create report templates that can be reused to access the most currently available data.

Statistics

Demonstrate how to perform t-tests and regressions using Quality Analyst.

Importing Data from Excel

Teach how to import data from Microsoft Excel as a .CSV file. Review how to create a data set. Use the copy-and-paste method. Save Excel data as a comma-delimited file and import CSV files into Quality Analyst. Create a header file as necessary.

Importing Data from SQL Server and Industrial SQL Server

Show how to create an ODBC data source. Import SQL Server data using the database table and variable selector.

Importing Data from Access

Explore how to import data from Access. Write a SQL query using Access. Link to an ODBC database from Access. Import a query into Quality Analyst. Simultaneously import data from Access and SQL Server into one data set.

Run Files

Learn how to use the Run File Wizard to create automated statistical reports with single, grouped, and interactive outputs.

Dynamic Data Exchange

Demonstrate how to use DDE with Excel as a DDE server.

Sydney Office
Unit E1, 25 Paul St North
NORTH RYDE NSW 2113
Telephone: (02) 9870 8758
Fax: (02) 9870 8761

Brisbane Office
Office 12, Level 1,
1344 Gympie Road
ASPLEY QLD 4034
Telephone: (07) 3863 9955
Fax: (07) 3863 9950

Melbourne Office
4 Kershaw Drive
NARRE WARREN VIC 3805
Telephone: (03) 8790 6200
Fax: (03) 8790 6300